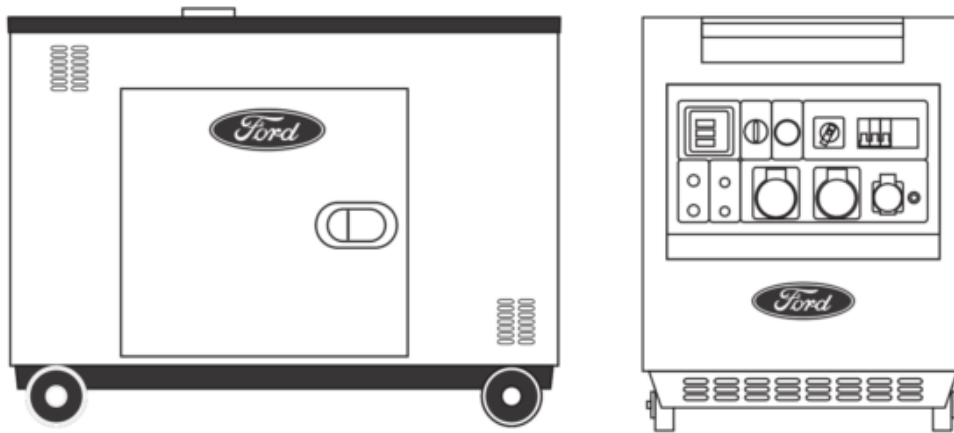


Ford FDT9200SE Diesel Generator Owner's Manual

[Home](#) » [Ford](#) » Ford FDT9200SE Diesel Generator Owner's Manual 



FDT9200SE Diesel Generator Owner's Manual



SAFETY INFORMATION

In order to ensure the safe use of the generator please follow the next safety instructions:

1. Check the outside of the generator in order to detect any apparent trouble.
2. Check the screws and nuts, they could loosen because of the equipment vibration.
3. The temperature range to use this equipment is between + 5 °C and 40 °C.
4. The use of good quality oil and diesel is a must
5. All elements must be cleaned regularly.
6. Storage should be in a dry place. Frost damage permanently your group. Drain your machine completely before storing it in a dry and warm place.
7. The air filter must be checked and cleaned regularly.
8. Make sure all filters are cleaned regularly.
9. Exhaust fumes contain carbon monoxide. This gas is odorless and colorless and is very dangerous. NEVER USE THE EQUIPMENT IN A CLOSED OR POORLY VENTILATED AREA.
10. The exhaust temperature is high during equipment use and remains hot even after turning off the generator. Be careful not to touch the hot exhaust and wait for the machine to cool before moving it.
11. The repairs to the generator should be done by qualified and authorized personnel for this purpose.
12. Do not smoke or allow flames or sparks during the operation of the generator or during filling the fuel tank. Do not store the generator near flammable material to avoid the danger of explosion.

13. Store the generator in a well-ventilated area.
14. Never place the generator in an inclined or vertical position to prevent fuel leakage and damage to equipment.



ATTENTION

The warranty is automatically voided if the process described to start and stop the group is not followed. Not following the process described can damage the equipment. ALWAYS control the level of oil and fuel as well as its maintenance before each use.

Contents [[hide](#)]

- [1 Technical Data](#)
- [2 COMPONENTS](#)
 - [2.1 General view](#)
 - [2.2 Side view](#)
 - [2.3 Control panel LED](#)
- [3 First startup](#)
 - [3.1 Preparation before starting up](#)
 - [3.2 Starting the Generator](#)
 - [3.3 Stopping the generator](#)
- [4 Engine maintenance](#)
 - [4.1 First oil change after 20 hours](#)
 - [4.2 Oil filter](#)
 - [4.3 Air filter](#)
 - [4.4 Diesel filter](#)
- [5 General maintenance](#)
 - [5.1 Prolonged storage](#)
- [6 Troubleshooting](#)
- [7 Documents / Resources](#)
- [8 Related Posts](#)

Technical Data

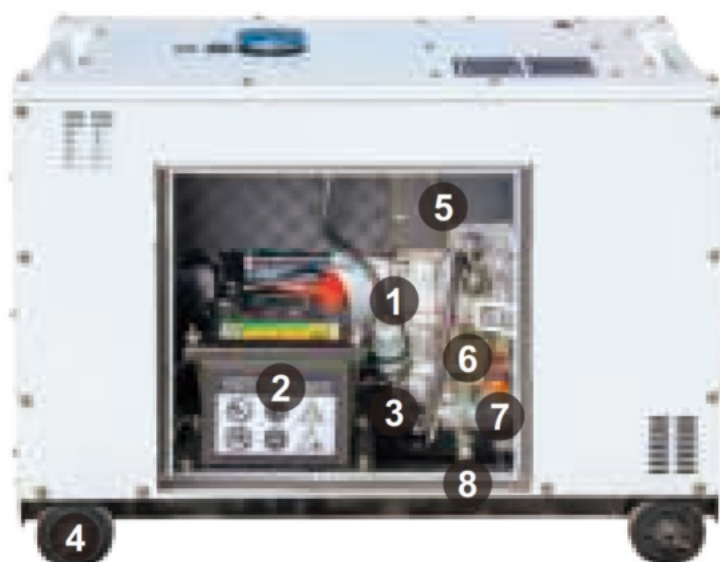
Model		FDT9200SE (FD7200S)
Frequency	Hz	50
Rated Power	kva	6 / 7.5 kva
Max. Power	kva	6.3 / 7.9 kva
Voltage	v	230 / 400

Current	A	25.2 / 11.4
Plugs		16A& 32A
Display		LED6
Fuel tank capacity	L	13
Running time @75% load	H	7
Sound level @ 7m	dBA	72
DC output	V/A	12 / 8.3
Battery	V/Ah	12 / 30
ENGINE		D500E
Engine type		Diesel
Power	hp	12
Start		Electric
Displacement	cc	498
Oil Capacity	L	1.75
ALTERNATOR		AL6-T

Power	Ku	6
Power Factor		1/0.8
Voltage Regulation		Brush / AVR
DIMENSIONS & WEIGHT		
Net Weight	Kg	162
Gross Weight	Kg	170
Machine size	mm	920x520x720
Dimensions Package	mm	960x560x760
FCL 20740'HO		48/144

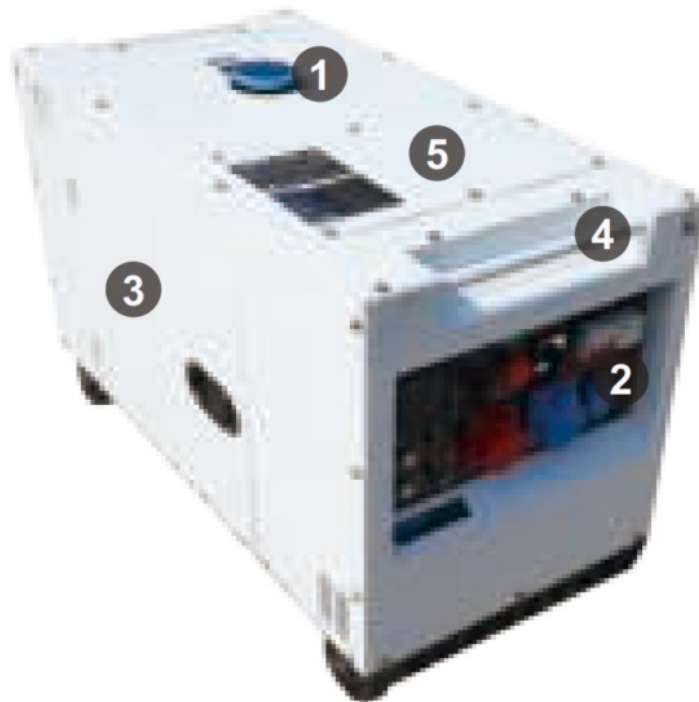
COMPONENTS

General view



1. Fuel filter
2. Battery 12V 36Ah
3. Oil filter
4. Transport wheels
5. Injection pump
6. Starter lever
7. Oil refill/Oil dipstick
8. Oil drain

Side view



1. Diesel tank
2. Control panel
3. Engine access
4. Carrying handle
5. Air filter

Control panel LED



1. LED6 display
2. Start key
3. Emergency stop
4. Transfer switch
5. Breaker
6. AUTO socket
7. ATS socket

8. Pre-heater button
9. Earth terminal
10. 400V 16A socket
11. 230V 3M socket
12. 230V 16A socket
13. Overload protector

First startup

Preparation before starting up

Put oil on the motor (**Fig.1**) using 1 5W40 oil, 1.6Lt maximum, check the level with the dipstick without screwing it in, the level must remain at the maximum line (without exceeding the upper mark).

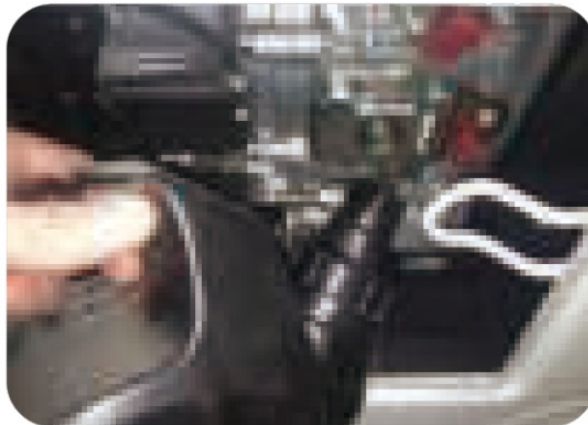


Fig. 1

Fill the fuel tank with diesel (**Fig 2**), with 17 liters (depending on the version).

Connect the positive (red wire) to the battery, insert it back into its housing, and pay attention not to touch the positive to the body or it could blow the fuse. Tape the positive terminal if necessary.



Fig. 2

Be sure to remove the lateral battery caps. (Fig 3)



Fig. 3

Starting the Generator

Turn the speed lever to the "RUN" position. (Fig 4)

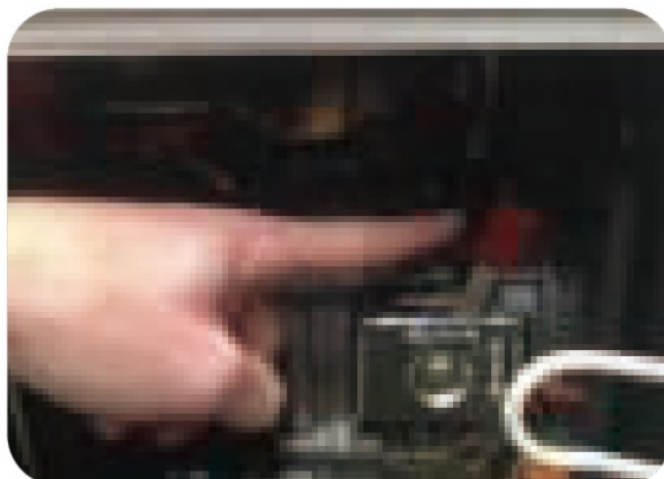


Fig. 4

It is possible that the first time you need to purge air from the circuit by removing the rubber tube indicated (Fig.5), letting flow the diesel. When no air, put them back in place, and do not touch the pressure tubes. Repeat if necessary.



Fig. 5

Insert the key into the bowler and proceed to startup. Turn right to the “ON” position to give contact. Turn the key to the START position to start the engine (**Fig 6**).

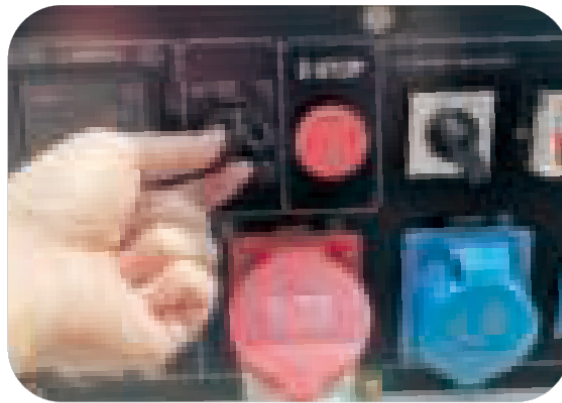


Fig. 6

Once the generator is running, make it work for 3 minutes and make sure the differential is at the “OFF” position (down). Then you can connect the load and put the differential at the “ON” position.

RESPECT THE GENERATOR’S RATED POWER. IF THERE’S AN OVERLOAD THE BREAKER WILL JUMP BETWEEN 3 AND 10 SECONDS.

WHEN THE GENERATOR IS RUNNING THE DIGITAL DISPLAY LED 5 WILL SHOW YOU THE VOLTAGE, FREQUENCY, THE HOURS OF USE, AND THE APPLIED POWER.

Stopping the generator

Turn the differential to the “OFF” position (down, **Fig 7**) and disconnect the equipment connected to the control panel.

(If you miss this step, you may damage the voltage regulator AVR).



Fig. 7

To stop the engine, turn the key) to the "OFF" position.



Fig. 8

Engine maintenance

First oil change after 20 hours

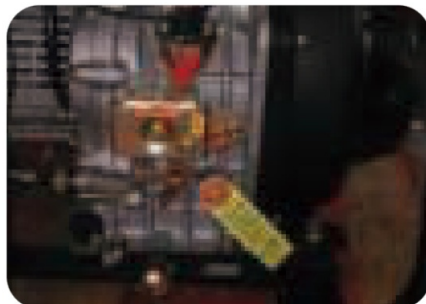


Fig 9

Place a recipient underneath to catch the oil.
Loosen the drain screw. Drain the engine oil.
Fit and tighten the drain screw again.

Replace the gasket screw at each change to avoid losses.
Fill the engine with new oil 15W40 (1.6Lt).
NEXT OIL CHANGES EVERY 100 HOURS OF OPERATION.

Oil filter



Fig 11

Remove and clean the oil filter on every oil change by changing the gasket to prevent leakage.
If there are impurities in the filter, it can block the oil sensor stopping the start of the generator.
REPLACE THE OIL FILTER EVERY 200 HOURS.

Air filter



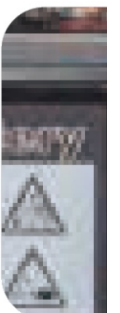
Fig 12

Clean the air filter with compressed air at each oil change and replace it every 200 hours.
WARNING: DO NOT START THE ENGINE WITHOUT AN AIR FILTER.

Diesel filter



Fig 13



Replace every 100 hours (**Fig 14**).

The filter is located inside the fuel tank or in the fuel pipe (depending on the model).

It is above the battery to replace it and place a container, as there is no stopcock to prevent the escape of diesel.

If the fuel used is dirtier than normal, replace it earlier than indicated.

General maintenance

Never incline the generator during transportation without emptying the oil pan.

Failure to observe this instruction may cause severe damage to the engine.

We recommend cleaning the equipment after use and before storage.

Visually check the external components.

Check the screws and nuts due to equipment vibration could loosen.

Prolonged storage

To keep the equipment in perfect condition we recommend the following steps:

– Drain the fuel tank.

– Drain the engine oil.

– Pull the starter until you feel some resistance (allowing the valves to close in order to prevent moisture and corrosion of the cylinder and the valve regulation)

-After prolonged storage, the starting process is identical to the first startup.



ATTENTION

The warranty is automatically voided if the process described to start and stop the group is not followed.

Not following the process described can damage the equipment.

ALWAYS control the level of oil and fuel as well as its maintenance before each use.

Troubleshooting

Causes		Remedies
No start of the engine	Insufficient fuel	Fill in the fuel
	Air in the fuel circuit	Purge air in the fuel circuit
	No spray-on injector or a little quantity	Repair and adjust the injector
	Speed control rod not at "RUN" position	Set control rod to "RUN" position
	Check the lube oil lever	The level between the upper mark "H" and lower mark "L"
	Dirty on the nozzle	Clean the nozzle
	No electricity in the battery	Charge or change the battery
No output of the generator	Not turn on the switch	Turn to the "CLOSE" position
	Worse contact with the socket	Adjust the socket
	Not reach the rated speed of the engine	According to the stipulation
Voltage too low	Not reach the rated speed of the engine	Set speed control rod to operation position.
	Check AVR	Adjust the resistance clockwise
Automatic stop after a certain time of operation	(1)lack of the fuel (2)lack of lube oil (3)voltage too low/too high (4)frequency too low/too high (5)over-current	Repair according to relative alarming of the control panel



www.fordpower.cc

Documents / Resources

<p>The thumbnail shows the cover of the 'Ford Diesel Generator OPERATOR'S MANUAL' for model FDT9200SE. It features the Ford logo, a picture of the generator unit, and technical specifications.</p>	<p>Ford FDT9200SE Diesel Generator [pdf] Owner's Manual FDT9200SE, FD7200S, Diesel Generator</p>
--	--

Related Posts

[Ford Focus Accessory User Manual](#)



ory User Manual - Optimized PDF Ford Focus Accessory User Manual - Original PDF Ford Focus...



[2021 Encore Owner's Manual](#)

2021 Encore Owner's Manual - Optimized PDF 2021 Encore Owner's Manual - Original PDF



[2021 Explorer Owner's Manual](#)

2021 Explorer Owner's Manual - Download [optimized] 2021 Explorer Owner's Manual - Download



[Hughes HIRD-D45 Owner Manual](#)

Hughes HIRD-D45 Owner Manual - Original PDF Hughes HIRD-D45 Owner Manual - Optimized PDF